



## **MANUALE D'USO E MANUTENZIONE**

---

**ISTRUZIONI ORIGINALI**

Leggere attentamente il manuale di istruzioni prima di utilizzare il prodotto. Conservare per consultazioni future.

**RASAERBA A BENZINA**  
**cod. 67415 / mod. SRCS-46A-M**



Leggere attentamente il manuale di istruzioni prima di utilizzare l'apparecchio e conservarlo per consultazioni future.  
Attenzione: tutte le immagini riportate nel presente manuale hanno scopo puramente illustrativo e possono variare senza preavviso.



Gentile Cliente,  
grazie per avere scelto un prodotto Polar.

I nostri prodotti sono costruiti con i più elevati standard qualitativi per permettere una esperienza di uso semplice, piacevole e sicura.

E' importante dedicare qualche momento alla lettura di questo libretto di istruzioni: le informazioni che seguono sono fondamentali per la sicurezza e per ottenere il massimo delle potenzialità del prodotto.

In caso di necessità, per qualsiasi chiarimento o consiglio, siamo a disposizione ai recapiti riportati in fondo a questo libretto: saremo felici di aiutare e risolvere qualsiasi genere di problema grazie ai nostri tecnici specializzati.

Grazie per la preferenza!

Polar – un marchio Vinco Srl

ITALIANO

---

# 1. Safety instructions

## 1.1 About manual

Before using this product, please read and understand all the contents of this manual and the labels on the product carefully. Follow the steps in this manual to install this product. Please be alert when using the product and operate in accordance with the contents of the manual, which will protect your safety. Keep this manual properly. If you transfer the product to a third party for use, please enclose this manual together with this product. Any operation that is inconsistent with the instructions in the manual may cause serious personal injury or damage to the product itself. Loss caused by not operating in accordance with this manual is not covered under warranty.

In order to improve the quality and product performance of this machine, there may be changes in technical parameters. The change belongs to Chongqing Shineray Agricultural Machinery Co., Ltd. The parts that are different from the contents of this manual will not be noticed separately. Thanks for your understanding!

## 1.2 Safety labels

These labels warn you of potential hazards that can cause serious injury.

Carefully read the meaning of each label. If a label comes off or becomes hard to read, contact your dealer for a replacement.



Warning: Caution!



Read manual carefully before operation.



Danger: Do not touch. Hot surface will burn fingers or palms



Danger: Keep away! Splashes may cause injury!

---



Keep 15 meters away from the machine.

---



Keep your hands and feet away from rotating blades. It may cut your hands and feet.

---



When in use, you need to wear safety protection devices

---



Before and during maintenance, the engine should be turned off and the spark plug cap should be removed

---

### 1.3 Product safety instruction

- Read instructions carefully, become familiar with controls and proper use of equipment.
- The lawn mower can only be used for weeding or picking up fallen leaves, please do not use it for other purpose.
- When cutting, be sure to wear boots and long pants, and do not start the product when you are barefoot or wearing sandals.
- Wearing suitable working gloves or limiting the working time can reduce the harm caused by vibration.
- Wearing earplugs or limiting the running time can reduce the harm caused by noise.
- Check the lawn mower and related parts before use.
  - ◆ Check for oil or gasoline leakage around and under the engine.
  - ◆ Check the blade, blade fastening bolts and tool holder for wear or damage. Do not use the tool when it is broken, cracked, bent, or loose bolts.
  - ◆ Check whether the muffler and blades are installed correctly.
  - ◆ Check that the installed baffle or shield and safety devices (guide plate

**ENGLISH**

---

or grass bag, etc.) are in place, and the installation is firm and undamaged

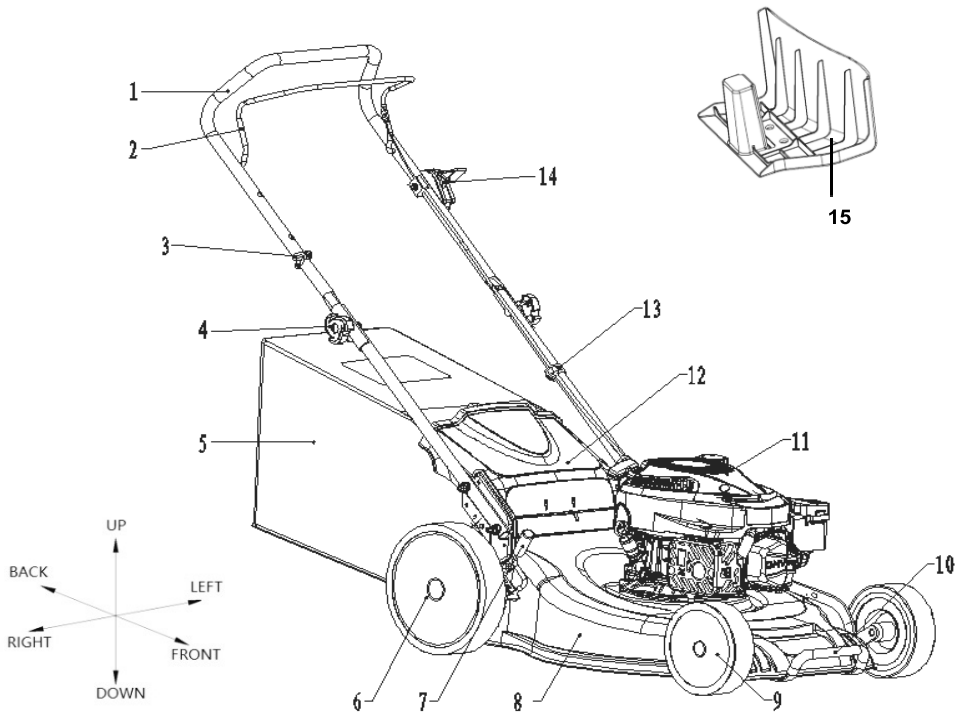
- ◆ Check that all nuts, bolts, and screws are complete and tightened so that the equipment is in a safe working condition.
- Anything which can be picked up and thrown by the blade is a potential hazard to you and others. Look out for things like stones, sticks, bones, and wires. Remove them from the mowing area.
- To avoid injury from blade contact or splashes, please ensure a safe operating distance, and keep children and bystanders 15 meters away from the lawn mower working area. If someone approaches, shut down immediately.
- Mow only in daylight or good artificial light.
- Avoid operating the equipment in wet grass, where feasible.
- Avoid operating in rainy days.
- Mowing on slopes:
  - ◆ Always be sure of your footing on slopes.
  - ◆ Mow across slopes, never mow up or down.
  - ◆ Walk, and never run.
  - ◆ Exercise extreme caution when changing direction on slopes.
  - ◆ Do not mow excessively steep slopes.
- Gasoline is highly flammable:
  - ◆ Store fuel in containers specifically designed for this purpose;
  - ◆ Stay away from fire and do not smoke while refueling;
  - ◆ Refuel outdoors only;
  - ◆ Add fuel and check oil before starting the engine; Never remove the cap of the fuel tank or add gasoline while the engine is running or when the engine is hot;
  - ◆ Before handling fuel, switch off the engine and leave it cool;
  - ◆ If gasoline is spilled, do not attempt to start the engine but move the machine away from the area of spillage and avoid creating any source of ignition until the gasoline vapors have dissipated.;
  - ◆ Install the fuel filler cap securely;

- 
- ◆ Keep away from source of heat, spark and naked fire. Eg.: lamp in service, gridiron, electric appliance, electric tools and vehicles.
  - Driving lever shall be released when starting the engine.
  - Keep feet away from blades when starting.
  - Avoid mower inclination when starting.
  - Do not adjust cutting height during engine running.
  - Do not change engine RPM original factory setting or keep engine running overspeed.
  - Do not stand in front of grass discharging area when starting.
  - Stop the engine when there's any abnormal noise or vibration.
    - ◆ Check if there's damage.
    - ◆ Replace or repair any damaged parts
    - ◆ Check and tighten any loosen parts.
  - Reduce the throttle valve before switching off engine. Shut off throttle valve after grass cutting.
  - Be cautious when reversing or pull back the mower.
  - Do not touch or remove the spring from mower in case of injury.
  - Do not keep hands or feet near or under the rotation part. Keep clean of the grass discharging area.
  - Do not start or run the engine in closed area. Run the engine at ventilated area to avoid CO accumulation harm to human.
  - Do not refuel or add oil during running. Refueling and adding oil shall be done after engine cooling.
  - Do not add too much fuel. Avoid spilling.
  - Do not touch muffler before engine cooling.
  - Stop the engine and disconnect spark plug cap in below cases:
    - ◆ Before cleaning obstacles and clog.
    - ◆ Before inspecting, cleaning and maintaining the mower.
    - ◆ Check the damage of mower after clashing with objects. Restart the engine after repairing.
    - ◆ Stop the engine and repair whenever there's any abnormal vibration.
  - Stop the engine in below cases:

- 
- ◆ Whenever you need to leave the mower.
  - ◆ Before refueling the mower or adding oil.
  - ◆ When passing through a gravel driveway, sidewalk, or road
  - ◆ When mower is transported in an inclined situation or in the transporting area.
  - Do not store the mower in the construction that is possible to burn sparkling, whenever there's fuel inside fuel tank.
  - Cool the engine when store the mower in a closed area.
  - To reduce the fire hazard, keep the engine, muffler, battery compartment (if applicable) and gasoline storage area free of grass, leaves or excessive grease.
  - Do not use the mower:
    - ◆ When lack of careful manual reading and understanding or basic operation knowledge or skills.
    - ◆ after fatigue, illness, drunkenness and the use of hallucinogenic drugs and other substances affecting the human body;
    - ◆ The operator is a minor, the elderly, the sick and infirm person;
    - ◆ The operator does not wear safety protective equipment;
    - ◆ No protective device (shield) is installed or the protective device is damaged;
    - ◆ No careful inspection of the machine, incomplete or loose parts of the machine;
    - ◆ When there are people around, especially children or pets.
  - If the lawn machine is used under abnormal conditions or improperly maintained, any part of the lawn machine may cause a potential hazard
  - The company shall not be liable for any machine damage or personal injury caused by unauthorized modification.
  - Do not dismantle the lawn machine privately, in case of accidents. Consult your dealer about replacing parts or removing the lawn mower.

## 2. Components identification

Model:SRCS-46A、 SRCS-51A



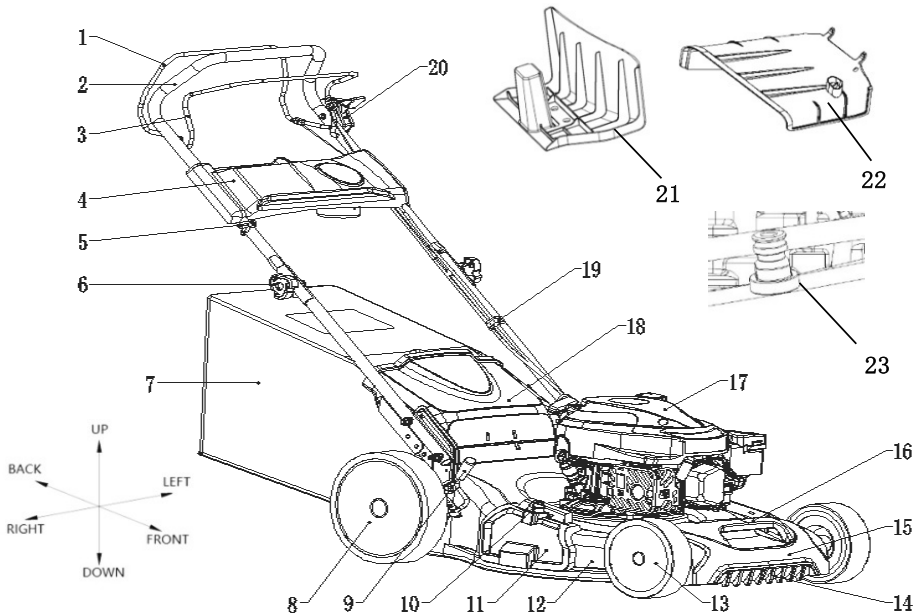
### Components name :

- |                                    |                               |
|------------------------------------|-------------------------------|
| 1. Handlebar                       | 11. Engine                    |
| 2. Brake lever                     | 12. Discharge guard           |
| 3. Wire hook                       | 13. Wire clip                 |
| 4. Locking knob                    | 14. Throttle lever (optional) |
| 5. Grass bag                       | 15. Mulching plug(optional)   |
| 6. Rear wheel                      |                               |
| 7. Cutting height adjustment lever |                               |
| 8. Cutting housing                 |                               |
| 9. Front wheel                     |                               |
| 10. Front guard (optional)         |                               |

ENGLISH



## Model:SRCZ-46A、SRCZ-51A、 SRCZ-56A



### Components name :

- |                                     |                                  |
|-------------------------------------|----------------------------------|
| 16. Driving/walking lever           | 29. Grass comb                   |
| 17. Handle bar                      | 30. Front cover                  |
| 18. Brake lever                     | 31. Front handle                 |
| 19. Handle bar panel                | 32. Engine                       |
| 20. Wire hoop                       | 33. Discharge guard              |
| 21. Locking knob                    | 34. Wire clip                    |
| 22. Grass bag                       | 35. Throttle valve(optional)     |
| 23. Rear wheel                      | 36. Mulching plug(optional)      |
| 24. Cutting height adjustment lever | 37. Side discharging outlet      |
| 25. Side discharge lock             | 38. cleaning connector(optional) |
| 26. Side discharge cover            |                                  |
| 27. Cutting housing                 |                                  |
| 28. Front wheel                     |                                  |

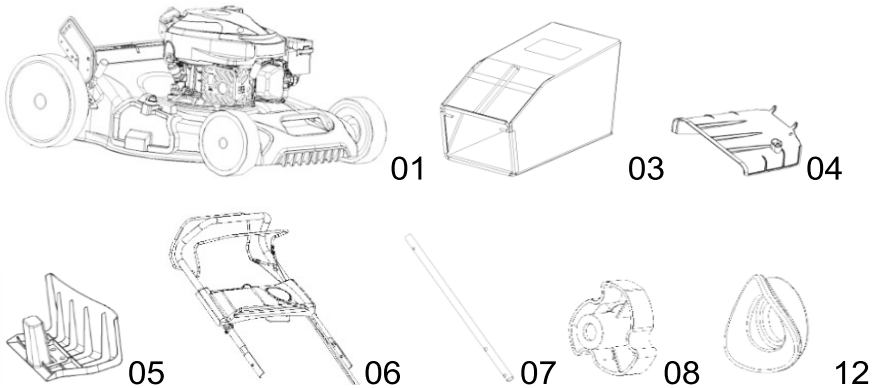
ENGLISH

### 3. Technical specification

Name	Units	Model				
		SRCS —46A	SRCZ —46A	SRCS —51A	SRCZ —51A	SRCZ —56A
Engine model	/	SR1P65 F/P	SR1P65 F/P	SR1P65F /P	SR1P70 F/P	SR1P70 F/P
Max. power	kw/rpm	2.5/3060	2.5/3060	2.5/3060	2.8/3060	2.8/3060
Max. output torque	N.m/rpm	7.8/2500	7.8/2500	7.8/2500	8.8/2500	8.8/2500
Rated RPM	rpm	2900	2900	2900	2900	2900
Cutting width	mm	457	457	503	503	550
Cutting height/shifts	mm	25-76 (10 shifts)	25-76 (10 shifts)	25-76 (10 shifts)	25-76 (10 shifts)	25-76 (10 shifts)
Discharging type	/	Rear discharge, rear collection	Rear discharge, rear collection, side discharge, mulching.	Rear discharge, rear collection	Rear discharge, rear collection, side discharge, mulching.	Rear discharge, rear collection, side discharge, mulching.
Grass bag volume	L	60	60	60	60	60
Driving type	/	Hand	Self-prop	Hand	Self-prop	Self-prop

		push	elled	push	elled	elled
<b>Driving speed</b>	m/s	/	1	/	1.07	1.07
<b>Dimension</b>	cm	145×54 ×105	145×64 ×105	147×55 ×105	147×67 ×105	155×72 ×105
<b>Net weight</b>	KG	24	29.4	26.8	31.8	33
<b>Working ambient</b>	°C	0°C-40°C	0°C-40°C	0°C-40°C	0°C-40°C	0°C-40°C

## 4. Packing list



N o.	Name	Model				
		SRCS-46A	SRCZ-46A	SRCS-51A	SRCZ-51A	SRCZ-56A
1	Lawn mower	1	1	1	1	1
2	manual	1	1	1	1	1
3	Grass bag	1	1	1	1	1
4	Side discharge outlet	-	1	-	1	1
5	Mulching plug	-	1	-	1	1
6	Upper handlebar	1	1	1	1	1
7	Down handle bar	2	2	2	2	2
8	Locking knob	2	2	2	2	2
9	M8*45 special shaped bolt	2	2	2	2	2

ENGLISH

---

10	<b>M8*40 square neck bolt</b>	4	4	4	4	4
11	<b>M8 nut</b>	4	4	4	4	4
12	<b>Plastic washer</b>	2	5	2	5	5
13	<b>φ8 washer</b>	4	4	4	4	4
14	<b>ST4.8*22 tapping screw</b>	-	3	-	3	3
15	<b>Spark plug tool</b>	1	1	1	1	1

---

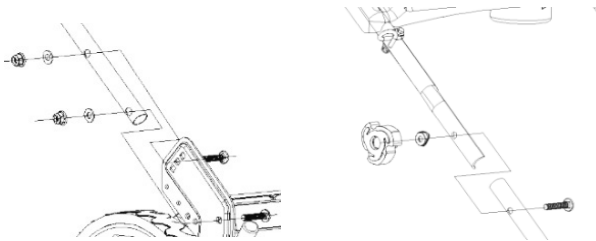
## 5. Installation guide

### 5.1 Unpack instruction:

- Installation shall be done before using the mower.
- Unpack and take out the parts, check the parts according to the packing list.
- Check the parts carefully. Ensure there's no damage during transportation.
- If any parts missing or damage, do not use the product and contact with dealer.

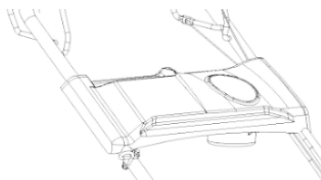
### 5.2 Handlebar installation

- 1) Take out 2 pieces of down handlebar; Align them with left and right handle bar and tighten with 4\* M8\*40 square neck bolt by handlebar, down handle bar,  $\phi 8$  washer and M8 nut.
- 2) Mount the upper handlebar onto down handlebar. Tighten with 2 \*M8\*45 special shaped bolt by down handle bar, upper handlebar, plastic washer and M8 locking knob.



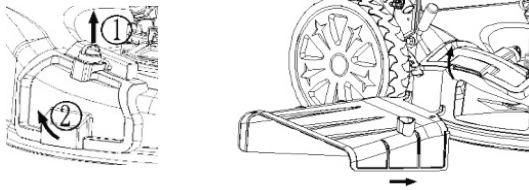
### 5.3 Handlebar panel installation(optional)

Mount the handlebar panel onto upper handlebar and tighten with 3\* ST4.8\*22 tapping screw by plastic washer.



## 5.4 Side discharge outlet installation( optional)

- 1) Pull up the side discharge lock, uplift the side discharge cover and hang upside down the side discharge outlet onto spindle.
- 2) Put down the side discharge cover and press well the side discharge outlet.

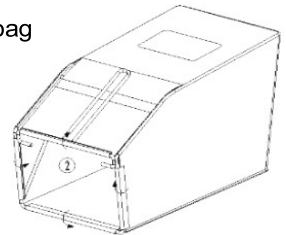


## 5.5 Grass bag installation

Mount the grass bag support onto grass bag and match with slot.

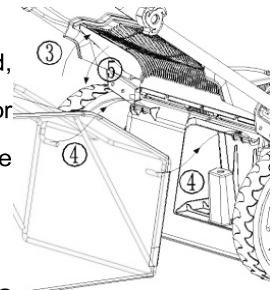
### Installation (only when engine is off)

- 1) Raise the discharge guard, and hook the grass bag frame onto the cutter housing as shown.
- 2) Release the discharge guard to secure the grass bag in place.



### Removal (Only when engine is off)

- 1) Raise the discharge guard, grasp the grass bag handle and remove the grass bag.
- 2) Release the discharge guard.
- 3) When the grass bag is clear of the discharge guard, you can lift the grass bag through the handlebars, or remove it from the rear of the mower below the handlebar.



### Warning:

- Do not operate mower when operating the grass bag.
- Ensure the grass bag hoop is fixed well and back cover is well matched on top of grass bag.

### Warning:

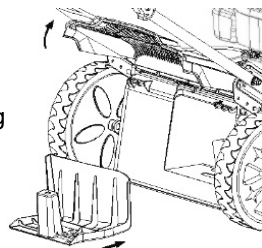
---

Under normal use, grass bag is possible to be worn out. To reduce injury risk, please check grass bag frequently and replace whenever it's worn or damage.

## 5.6 Mulching plug installation (optional)

(When engine is off)

1. Uplift the rear cover; install the mulching plug onto rear discharge outlet and lock.
2. Put down rear discharge cover.





---

## 6. Pre-operation checks

### 6.1 Check protective devices

Be sure to wear protective clothing. Long pants and eye protection can lower your risk of injury from thrown objects. Wear footwear that protects your feet and won't let you slip if you mow on slopes or uneven ground.

### 6.2 Check your lawn

- For your safety and for the safety of others, always inspect the area before mowing.
- Anything which can be picked up by the blade and thrown is a potential hazard to you and others. Look for things like stones, sticks, bones, and wires. Remove them from the mowing area.
- Check the length and condition of the grass, so you will know what cutting height and mowing speed to use.
- Avoid mowing wet grass. Not only will wet grass clog your cutter housing and collect in clumps on the lawn, it also gives poor traction, increasing your risk of losing your footing.

### 6.3 Check people and pets

People and animals near the mowing area can move into your path or into a position where they could be struck by thrown objects. Clear the area of people and pets, especially children. Their safety is your responsibility.

### 6.4 Check the lawn mower

#### 1) Oil level:

Check the engine oil level with the engine stopped and the mower on a level surface.

- a) Remove the oil filter cap/dipstick and wipe it clean.
- b) When oil level is below lower limit, add the recommended oil to the upper limit level.
- c) Secure the oil dipstick.

---

**Warning:**

**Running the lawn mower under low oil situation will cause damage to lawn mower and it's not covered under the warranty.**

**2) Fuel level:**

- a) Refuel in a well-ventilated area before starting the engine. If the engine has been running, allow it to cool.
- b) Remove the fuel filler cap and check the fuel level. Refill the tank if the fuel level is low. Refuel carefully to avoid spilling fuel.
- c) Do not overfill; there should be no fuel over the upper limit mark. After refueling, tighten the fuel filler cap securely.

**NOTICE:**

**Fuel can damage paint and plastic. Be careful not to spill fuel when filling your fuel tank. Damage caused by spilled fuel is not covered under warranty.**

**Fuel recommendations**

Use unleaded gasoline with 92# or higher.

This engine is certified to operate on unleaded gasoline. Unleaded gasoline produces fewer engine and spark plug deposits and extends exhaust system life. Never use stale or contaminated gasoline or an oil/gasoline mixture. Avoid getting dirt or water in the fuel tank. Occasionally you may hear light "spark knock" or "pinging" (metallic rapping noise) while operating under heavy loads. This is no cause for concern. If spark knock or pinging occurs at a steady engine speed, under normal load, change brands of gasoline. If spark knock or pinging persists, see your servicing dealer.

**NOTICE:**

**Running the engine with persistent spark knock or pinging can cause engine damage. Running the engine with persistent spark knock or pinging is misuse, and the Warranty does not cover parts damaged by misuse.**

**WARNING: Gasoline is highly flammable and explosive. Stay away from smoke, spark and naked fire when handling fuel.**

### 3) Air cleaner:

Make sure the air filters are clean and in good condition. A dirty air filter will restrict air flow to the carburetor, reducing engine performance.

Remove the air cleaner cover and check if air filter is damaged or dirty.

- a) Replace when it's damaged; when it's dirty, clean with kerosene and dry it.
- b) Prohibit running lawn mower without air cleaner.

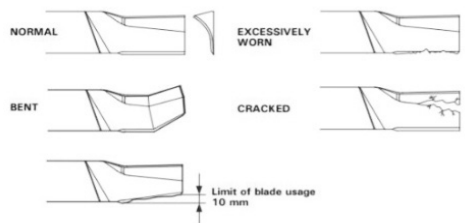
**WARNING:** Running lawn mower without air cleaner will damage lawn mower and not covered under the warranty.

### 4) Blade

Before each use, check the cutter blade for damage or excessive wear.

- a) Check if blade is with any split, bending or excessive wear.
- b) Replace when it's necessary.
- c) Check if the blade is loose.

Secure it with torque 53.9N.m  
(5.5kgf·m).



#### **WARNING:**

- To avoid severe personal injury, disconnect the spark plug cap to prevent accidental starting, and wear heavy gloves to protect your hands from the cutter blade.
- Never operate the mower with a worn, damaged, split or dented blade. Pieces of blade which breaks off and is thrown outwards can cause serious bodily injuries.
- Blade wear is increased when the mower is used on sandy soils.
- Check the blade more often when the mower is used in these conditions.

A dull blade can be sharpened, but a blade that is worn out, bent, cracked, or otherwise damaged must be replaced. A worn or damaged blade can break, causing

---

blade pieces to be thrown from the mower.

When a blade needs sharpening or replacement, take the lawn mower to your servicing dealer, or, if you have a torque wrench and other proper tools, you can remove and install the blade yourself.

**NOTICE:**

**Start the machine to observe the blade. If any abnormal vibration, stop using it immediately, check it in time, and send it to the service center if necessary.**

**5) Rear cover, side cover (optional)**

Check whether the rear cover and side discharge cover are cracked or damaged, and replace if necessary;

**Warning:**

**It is forbidden to run the lawn mower without rear cover and side cover, otherwise it may cause personal injury.**

**6) Grass bag**

A lawn mower works like a vacuum cleaner; it blows air through the bag, which traps the grass clippings. Always empty the grass bag before it becomes filled to the limit of its capacity. Bagging performance will diminish after the bag becomes about 90% filled. Also the bag is easier to empty when not packed full.

**Inspection:**

- a) Inspect the grass bag before use.
- b) Check for holes, tears, and excessive wear.
- c) The grass bag will wear during normal use and will eventually require replacement.

**7) Fasteners**

Check whether all fasteners (bolts, nuts) are complete and loose, replace and tighten them if necessary.

**8) Cutting height**

- a) Check the cutting height settings.  
SRCS-46A 、 SRCZ-46A —the cutting height setting range is

---

27mm~77mm(approximate value);

SRCS -51A、SRCZ—51A、SRCZ-56A—the cutting height setting range  
30mm~85mm(approximate value).

- b) To adjust cutting height, pull the adjustment lever toward the wheel, and move it into another notch.
- c) If you are not sure what cutting height to select, start with a high setting and check the appearance of the lawn after mowing a small area. Then readjust cutting height if necessary.

**WARNING:**

**Stop the engine, when adjusting the cutting height!**

---

# 7. Operation

## Precautions

- Before operating the mower for the first time, please review the SAFETY INSTRUCTIONS and SAFE MOWING PRACTICES.
- Even if you have operated other mowers, take time to become familiar with how this mower works and practice in a safe area until you build up your skills.
- For your safety, avoid starting or operating the engine in an enclosed area such as a garage.

**DANGER! Your mower's exhaust contains poisonous carbon monoxide gas which can collect rapidly in an enclosed area and cause illness or death.**

## 7.1 Use of the control device during cutting

### 1) Throttle switch (Optional)

If you want a good cutting quality, the throttle switch should be kept at the "high" gear. The blade will rotate at the set high speed, generating strong wind, making the cutting more efficient. Do not try to increase the set engine speed, as this may cause the blade to break.

### 2) Brake lever

Brake lever connects flywheel brakes with ignition switch, so need to pull back the brake lever before starting the engine. Release the brake lever, to stop the engine when ignition switch is off electricity, and brake under the flywheel brake.

If keeping the brake lever released, the starter rope will not be pulled out due to flywheel brake.

Holding the brake lever and handlebar continuously will keep the engine and blade rotating.

To release the brake lever, engine will stop running and blades will stop rotating.

### Caution:

**When you need to leave halfway, you should release the brake lever to stop the engine.**

### 3) Driving lever

The driving lever controls the clutch of gears inside gear box through lever ropes to disengage and engage in order to drive/stop the rear wheels walking.

Hold the driving lever, lawn mower will walk forward. Release the driving lever, lawn mower will stop walking.

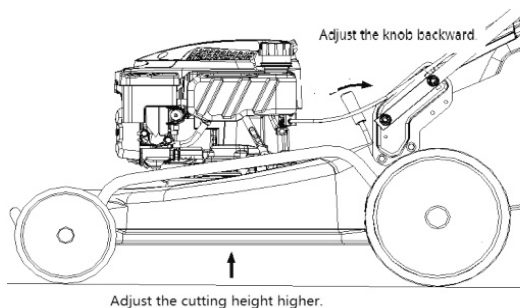
#### Caution:

- Release the driving lever before starting the engine. If holding the driving lever, the lawn mower will move forward when you pull the starter handle.
- When operating the driving lever, keep it either fully released or fully held. Action should be prompt and continuous.
- When you choose to operate the lawn mower in self-propelled condition, just hold the driving lever. It can give longer life to the clutch.

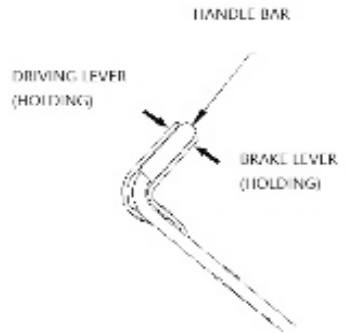
### 4) Handlebar adjustment

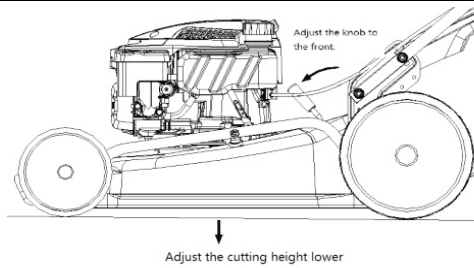
By adjusting the different shifts of adjustable handlebar, the chassis height of the lawn mower can be adjusted to change the cutting height.

- a) Move the adjustable handlebar forward to adjust the cutting height higher;



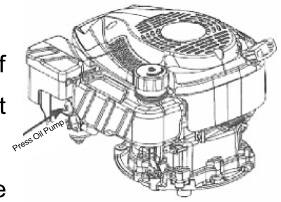
- b) Move the adjustable handlebar backward to adjust the cutting height lower;





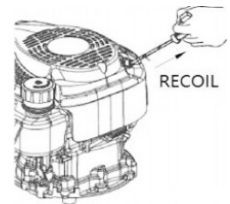
## 7.2 Starting the engine

- 1) Set the throttle valve( optional) to the low speed location;
- 2) Release the driving lever (optional). If the driving lever is held during engine start, the lawn mower will move forward.
- 3) Press the oil pump to let fuel go into carburetor.
- 4) Stand at the operating position behind the handle of the lawn mower, hold the brake lever, and hold it together with the handlebar.
- 5) Pull the starting rope slightly, when feeling the resistance force, pull promptly the rope according to the starting direction in the picture. Set back the starting rope slowly and put the starting knob on the hoop.
- 6) Adjust the throttle valve (optional) to the high speed location.



### Attention:

- Keep hands and feet away from the chassis when starting the engine and during operation.
- Continue to hold the brake lever and handlebar with your hands (keep the brake lever holding), otherwise the engine will stop. It is easier to start the engine on clean or cut lawn because the blade can rotate freely.



## 7.3 Stop the engine

### Emergency stop

SRCS-46A 、 SRCZ-46A Release brake lever.

SRCS-51A、SRCZ—51A、SRCZ-56A Release driving lever and brake lever.

### Normal engine stop



- 1) Move the throttle lever to the LOW position.
- 2) Release the flywheel brake lever.
- 3) Release the driving lever.

## 7.4 SAFE MOWING PRACTICES

For your safety, keep all four wheels on the ground and be careful to avoid losing your footing and your control of the mower. Keep a firm grip on the handlebar, and walk, never run, with the mower. Be very careful when mowing uneven or rough ground.

If stuck, do not kick or shove the mower with your foot. Use the handlebar to control the mower, stop the engine and check carefully (beware of electric wire or other object to cause human injuries.)

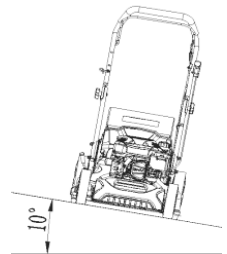
### WARNING:

- **The blade is sharp and spins at high speed.**
- **A spinning blade can cut you severely and can amputate fingers and toes.**
- **Wear protective footwear.**
- **Keep your hands and feet away from the cutter housing while the engine is running.**
- **Stop the engine before performing any adjustment, inspection, or maintenance.**

### 1) Slopes

Mow across slopes, not up or down. Avoid steep slopes more than 10°, and be careful when changing direction.

Mowing on a slope when the grass is damp or wet could cause you to slip, fall, and lose control of the mower.



### 2) Obstacles

Use the side of the mower to cut close to large obstacles, such as fences or walls.

Push the mower around obstacles for better directional control. Be careful when mowing over obstacles embedded in the lawn, such as sprinkler heads, paving, edging, etc. Avoid anything that sticks up above the surface of the lawn.

If the blade hits something, or if the mower starts to vibrate, stop the engine

immediately, disconnect the spark plug cap, and check for damage. Striking objects may damage the blade, bend the crankshaft, and/or break the cutter housing or other components. Vibration usually indicates serious trouble.

## WARNING

- **A worn, cranked, or damaged blade can break, and pieces of the damaged blade can become dangerous projectiles.**
  - **Thrown objects can cause serious injury.**
  - **Inspect the blade regularly, and do not operate the mower with a worn or damaged blade.**
  - **The warranty does not cover parts damaged by accident or collision.**
- 3) Gravel and Loose objects**

Gravel, loose stones, and landscaping material can be picked up by the mower and thrown many feet with enough force to cause serious personal injury and/or property damage. The best way to prevent potential injury from thrown objects is to release the flywheel brake lever to stop the blade before reaching areas with gravel, loose stones, or landscaping material.

## 4) Cutting Height

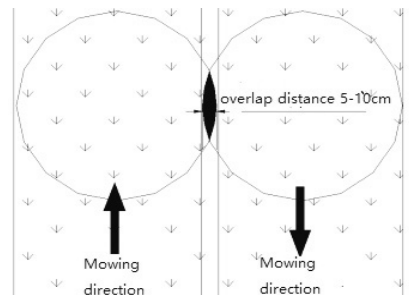
Consult a local nursery or lawn and garden center for cutting height recommendations and advice about specific types of grasses and growing conditions in your area.

If you look closely, you'll see that most grass has stems and leaves. If you cut off all the leaves, you'll scalp the lawn. Let the grass recover between every two mowings. Your mower will work better, and your lawn will look better.

If your grass gets too tall, cut it once at the highest cutting height setting, then mow again in 2 or 3 days. Don't take off more than one third of total grass height in any one mowing, or brown patches may develop.

## 5) Cutting width

For an even lawn finish, overlap each mowing swath by approximate 5-10cm. If



---

the grass is very tall or thick, use more overlap and a narrower mowing swath.

#### **6) Blade speed**

The blade must spin very fast to cut properly. Always use the HIGH throttle setting, and keep the engine running at maximum rpm. If engine speed drops, it could mean the engine is being overloaded by the blade trying to cut too much grass. Mow a narrower swath, move the mower slower, or raise the cutting height.

#### **7) Blade sharpness**

A sharp blade cuts cleanly. A dull blade tears the grass, leaving shredded ends that turn brown. When your blade doesn't cut cleanly anymore, have it sharpened or replaced.

#### **8) Dry grass**

If the ground is too dry, mowing will stir up a lot of dust. Besides being unpleasant to work in, too much dust will clog the carburetor, air filter. If dust is a problem, water your lawn the day before mowing. Mow when the grass is dry to your touch, but the soil is still moist.

#### **9) Wet grass**

Wet grass is slippery and can make you lose your footing. Also, wet grass clippings will clog the cutter housing and collect in clumps on the lawn. Always wait for wet grass to dry before mowing.

#### **10) Fallen leaves**

When equipped with the grass bag, your mower can be used to pick up fallen leaves for disposal. If using the mower to bag large amount of fallen leaves, and not for mowing, set the cutting height adjustment lever at highest setting.

If you want to mulch fallen leaves into your lawn, don't let the leaf cover get too deep before you begin. For best results, start mulching while grass still shows through the leaf cover. In places where fallen leaves completely cover the grass remove the leaves by raking, or install a grass bag, so your mower can pick them up for disposal.

#### **11) Clogged cutter housing**

Before clearing a clogged cutter housing, stop the engine and turn the fuel valve to the OFF position. With the spark plug cap disconnected, tilt the mower so the carburetor side is up.

Clear a clogged deck with a stick, not by your hands.

---

## 8. Transporting/Storage

### 8.1 Transporting

#### Before loading

- 1) Stop the engine (if the engine has just been running, it should be cooled for at least 15 minutes before loading into the vehicle).

**DANGER: A hot engine and exhaust system can burn you and can ignite some materials!**

- 2) Take off the spark plug cap;
- 3) Turn the fuel valve to the OFF position. This will prevent carburetor flooding and reduce the possibility of fuel leakage.
- 4) If equipped, remove the grass bag.

#### Loading and unloading

- If a suitable loading ramp is not available, two people should lift the mower on and off the transport vehicle while holding the mower level.
- Flatly position the mower on the transport vehicle. Tie the mower down with rope or straps, and secure the wheels. Don't tie the rope or straps to the controlling lever, adjustment levers, cables and the carburetor.
- The handlebar can be folded so the mower will take up less space.

### 8.2 Storage

#### Storage preparation

Proper storage preparation is essential for keeping your lawn mower trouble-free and looking good. The following steps will help to keep rust and corrosion from impairing your lawn mower's function and appearance, and will make the engine easier to start when you use the lawn mower again.

#### Cleaning

- 1) Wash the lawn mower, including the underside of the cutter housing. Wash the engine by hand, and be careful to prevent water from entering the air cleaner and/or muffler.

## NOTICE

- **Using a garden hose or pressure washing equipment can force water into the air cleaner. Water in the air cleaner will soak the filters and can enter the carburetor or engine, causing damage.**

- 2) Cutter housing: If using a garden hose or pressure washing equipment to clean the cutter housing, be careful to avoid getting water into controls and cables, or anywhere near the engine air cleaner or muffler opening.

Flush with hose connector:

- a) Connect the hose onto cleaning connector and turn on the water switch to wash the chassis.
  - b) Start the engine and let the blades run at normal working speed for a few minutes (wash it on the grass or other suitable places).
  - c) Do not allow water or washed debris to enter a clean water source.
- 3) Manual cleaning: If there are still debris after washing, use a plastic brush or cloth to clean it.

## NOTICE

- a) **Ensure the throttle switch is off before removing the spark plug cap.**
- b) **Wear thick gloves to avoid fingers being cut by blades.**
- c) **Tilt the lawn mower to the right with the oil dipstick facing down. This can prevent oil leakage and difficulty in starting.**

- 4) After cleaning:
- a) After cleaning, remove the hose and dry the surface of the lawn mower.
  - b) Place the lawn mower horizontally outdoors and start the engine until it reaches normal working temperature to evaporate residual moisture.
  - c) Turn off the engine and allow it to cool down.
  - d) After cleaning the lawn mower, let it dry. If necessary, repair the paint surface and apply a thin layer of anti-rust oil to any place that may rust. Coat the control cables with grease.

---

## Fuel

Gasoline will oxidize and deteriorate in storage. Old gasoline will cause hard starting, and it leaves gum deposits that clog the fuel system. If the gasoline in your mower deteriorates during storage, you may need to have the carburetor and other fuel system components serviced or replaced. The length of time that gasoline can be left in your fuel tank and carburetor without causing functional problems will vary with such factors as gasoline blend, your storage temperatures, and whether the fuel tank is partially or completely filled. The air in a partially filled fuel tank promotes fuel deterioration. Very warm storage temperatures accelerate fuel deterioration. Fuel deterioration problems may occur within 30 days, or even less if the gasoline was not fresh when you filled the fuel tank.

The Warranty does not cover fuel system damage or engine performance problems resulting from neglected storage preparation.

You can avoid fuel deterioration problems by draining the fuel tank and carburetor.

### **NOTICE:**

- **Gasoline spoils very quickly depending on factors such as light exposure, temperature and time. In worst cases, gasoline can be contaminated within 30 days.**
- **Using contaminated gasoline can seriously damage the engine**

To avoid this, please strictly follow these recommendations:

- Only use specified gasoline (see page 14).
- Use fresh and clean gasoline.
- To slow deterioration, keep gasoline in a certified fuel container.
- If long storage (more than 30 days) is foreseen, drain fuel tank and carburetor.

### **Draining the fuel tank and carburetor:**

- 1) Drain the fuel in the fuel tank into a suitable container (it is recommended to use a commercial manual fuel pump instead of an electric pump).
- 2) Place the fuel switch in the "on" position, and loosen the carburetor drain bolt counterclockwise by 1-2 turns.

- 
- 3) After the fuel is drained, tighten the carburetor drain bolt

## **DANGER**

- **Gasoline is highly flammable and explosive. You can be burned or seriously injured when handling fuel.**
- **Stop the engine and allow it to cool before handling fuel.**
- **Keep heat, sparks, and flame away.**
- **Handle fuel only outdoors.**
- **Wipe up spills immediately.**

## **Engine oil**

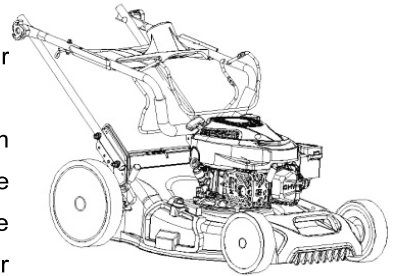
Change the engine oil (see page 31).

## **Engine cylinder**

- 1) Remove the spark plug (See page P33).
- 2) Pour 5 - 10 cc of clean engine oil into the cylinder.
- 3) Pull the starter grip several times to distribute the oil in the cylinder.  
Reinstall the spark plug.
- 4) Pull the starter grip slowly until resistance is felt, then return the starter grip gently. This closes the valves so moisture cannot enter.

## **Handlebar Folding**

- 1) Remove the grass bag (if installed).
- 2) Loosen or remove the two handlebar locking knobs.
- 3) Pull the handlebar struts to release them from the locating grooves, then swing the handlebar forward with the flywheel brake lever and drive clutch lever held by your hand. Don't allow the cables to be bent or pinched.
- 4) Loosely install the two handlebar locking knobs.



## **Storage precautions**

- If your mower will be stored with gasoline in the fuel tank and carburetor, it is important to reduce the hazard of gasoline vapor ignition. Select a well-ventilated storage area away from any appliance that operates with a flame, such as a furnace, water heater, or clothes dryer. Also avoid any area

---

with a spark-producing electric motor, or where power tools are operated.

- If possible, avoid storage areas with high humidity, because that promotes rust and corrosion.
- Unless all fuel has been drained from the fuel tank, turn the fuel valve to the OFF position to reduce the possibility of fuel leakage.
- Place the mower with its wheels on a level surface. Tilting can cause fuel or oil leakage.
- The handlebar can be folded for compact storage.
- With the engine and exhaust system cool, cover the mower to keep out dust. A hot engine and exhaust system can ignite or melt some materials.
- Do not use plastic sheet as a dust cover. A nonporous cover will trap moisture around the mower, promoting rust and corrosion.
- Keep the minors out of reach.

### **Storage installation**

- 1) Hold the brake lever and the drive lever, and raise the handlebar according to the reverse steps of disassembly. Be careful not to bend the cable.
- 2) Install grass bag, side discharge, and mulching plug (if necessary).

### **Usage after storage**

- Check the lawn mower according to the contents of the "Pre-operation inspection" in this manual.
- The fuel has been exhausted during storage preparation, and fresh gasoline must be added to the fuel tank. Before refueling, make sure that the gasoline in the container is fresh. If the gasoline is stored for a long time, it will oxidize or deteriorate, making it difficult to start the engine.
- During storage preparation, if engine oil has been added to the cylinder, the engine will emit smoke for a short period of time during the starting phase. This is a normal phenomenon.



---

## 9. Maintenance

### 9.1 The importance of maintenance

Good maintenance work is very important for safety, economy, and trouble-free operation, and it also helps reduce air pollution.

#### **WARNING**

- **To prevent accidental starting, the spark plug cap should be removed before maintenance.**
- **Improper maintenance or operating the lawn mower without troubleshooting will cause the lawn mower to work abnormally, which may cause serious injury or even death to the operator.**
- **Carry out maintenance work in accordance with the inspection chapters in this instruction manual and the requirements in the maintenance schedule.**

For taking good care of your lawn mower, pay attention to the following contents, including maintenance schedule, daily inspection procedures, and simple maintenance items that can be performed with conventional hand tools.

When maintenance is difficult or special tools are needed, professional maintenance personnel/technicians or service shops will do it. The maintenance schedule is suitable for normal working conditions. If the lawn mower performs abnormal work, such as overload, please consult the dealer.

#### **Maintenance safety matters**

Say carefully read the important safety warnings below.

**Note: It is impossible to list all the potential hazards during maintenance in the instruction manual. Whether you are competent for maintenance work is up to your own discretion.**

#### **WARNING:**

- **Failure to follow the maintenance instructions and safety warnings can result in serious injury or death.**

- 
- **Operate strictly in accordance with the maintenance steps and safety warnings in this instruction manual.**

### **Safety warning:**

Make sure that the engine is turned off before starting maintenance or repairs.

This measure can eliminate serious potential hazards:

- The carbon monoxide emitted by the engine is toxic (make sure to ventilate well before operation).
- Hot parts can cause burns (the engine and exhaust system can only be touched after cooling down).
- Moving parts may cause bumps (unless instructed, it is forbidden to start the engine).
- Before starting work, please read this instruction manual to make sure you have the required technical capabilities and corresponding tools.
- Be careful when there is gasoline near the work area to reduce the possibility of fire or explosion. Use flame-retardant solvents to clean parts. Keep parts contaminated with oil away from lit cigarettes, sparks, open flames, etc.

**Remember: The authorized service shop is more familiar with your lawn mower and has complete sets of equipment for maintenance and repair of lawn mowers. To ensure the best quality, safety and reliability, please use genuine parts from the factory. Using inferior substitutes will damage the lawn mower and will not be covered by the warranty.**

## 9.2 Maintenance schedule

Regular service period		Each use	First month or 10 hrs	Every season or 30 hrs	Every half year or 50hrs	Every year or 100hrs	Reference pages
Item							
Engine oil	Check level	√					13
	Change		√		√(*3)		31
Air cleaner	Check	√					14
	Clean			√(*1)			32
	Replace	Every year					32
Flywheel brake pad	Check-adjust				√(*2)		
Spark plug	Check-adjust				√		33
	Replace					√	33
Valve clearance	Check-adjust					√(*2)	
Combustion chamber	Clean					√(*2)	
Fuel tank and filter	Check	√					
	Clean					√(*2)	
Fuel tube	Check	Every 2 year (Replace if necessary)( *2)					
Blade bolt tightness	Check	√					15
Grass bag Check-clean G G 21 (applicable type)	Check-clean	√					15
Throttle cable	Check-adjust					√(*2)	
Gear/Walking gear	Lubrication grease					√(*2)	

**NOTICE:**

- (\*1) Service more frequently when used in dusty areas.
- (\*2) These items should be serviced by your servicing dealer, unless you have the proper tools and are mechanically proficient.
- (\*3) Change engine oil every 25 hours when used heavy load or in high ambient temperature.

## 9.3 Engine maintenance

### 1) Engine oil change

Drain the used oil while the engine is warm. Warm oil drains quickly and completely.

- a) Wipe the oil filler area clean, then remove the oil filler cap/dipstick.
- b) Place a suitable container next to the mower to catch the used oil, then tilt the mower on its right side. The used oil will drain through the filler neck. Allow the oil to drain completely.

**NOTICE: Please dispose the used motor oil and the containers in a manner that is compatible with the environment. We suggest you take it in a sealed container to your local recycling center or service station for reclamation. Do**

- c) Add recommended oil, don't let it overflow.

**NOTICE: Using nondetergent oil can shorten the engine's service life, and using 2-stroke oil can damage the engine.**

- d) After changing the engine oil, and before starting the engine, check the oil level with the mower on a level surface:
  - ① Wipe the dipstick clean.
  - ② Insert and remove the dipstick without screwing it into the filler neck.
  - ③ Check the oil level shown on the dipstick.
  - ④ If the oil level is low, add oil to reach the upper limit mark on the dipstick.

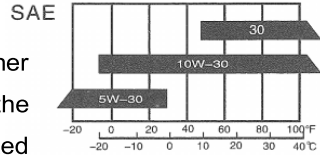
- ⑤ Do not overfill. If the engine is overfilled, the excess oil may get transferred to the air cleaner housing and air cleaner.
- ⑥ Screw in the oil filler cap/dipstick securely

**NOTICE: Running the engine with a low oil level can cause engine damage.**

**Engine oil recommendations:**

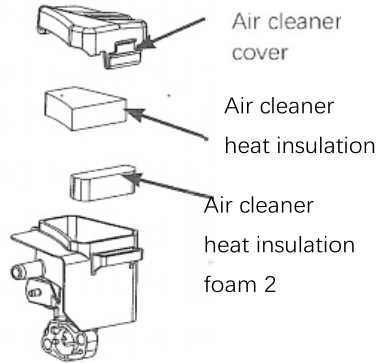
Oil is a major factor affecting performance and service life.

SAE 15W-40 is recommended for general use. Other viscosities shown in the chart may be used when the average temperature in your area is within the indicated range.



**2) Air cleaner service**

Dirty air cleaner will restrict air flow to the carburetor, reducing engine performance. If you operate the mower in very dusty areas, clean the air cleaner more often than specified in the MAINTENANCE SCHEDULE.

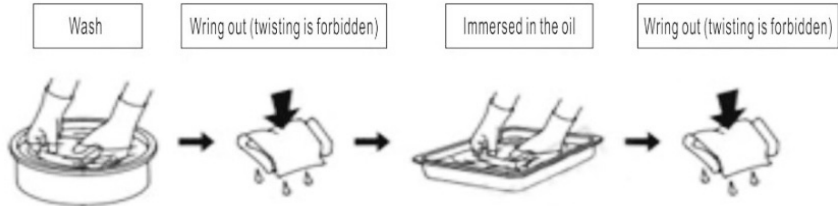


- a) Unscrew and remove the air cleaner nuts then remove the air cleaner cover.
- b) Remove the filter elements from the air cleaner housing, and remove the foam filter element from the paper filter element.
- c) Inspect the filter elements for holes or tears; and replace them if damaged.
- d) Clean the filter elements.

**NOTICE**  
**If the engine is running without an air filter element or the filter element is damaged, dust will enter the engine, thereby accelerating wear. Damage caused by such reasons is not covered under warranty.**

### Foam filter:

Wash with soap and warm water, rinse and dry, or wash with a non-flammable solvent and let it dry. Let the filter soak the clean oil, and then squeeze out the excess oil. If there is too much oil remaining on the foam, Gasoline engines will emit smoke during the initial start-up phase.



### Paper filter element:

Tap the filter element several times on a hard surface to remove excess dirt, or let compressed air pass through the filter from the inside. Don't try to brush off the dirt, the brush will let the dirt enter the small holes.

If the filter element cannot be cleaned according to the above method, please replace it with a new one.

- Wipe off the dirt in the air cleaner housing and cover with a damp cloth. Be careful not to let dirt get into the gas pipe of the carburetor.
- Reinstall the air filter and the air filter cover, and press the air filter buckle to lock it.

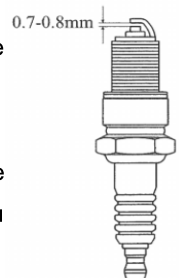
### 3) Check the action of the brake lever

Start the engine outdoors, loosen the brake lever, and the engine quickly stops running. Otherwise, the lawn mower needs to be sent to the dealer for inspection and repair.

### 4) Spark plug service

**Recommended spark plug:** F5TC/F5RTC

- Disconnect the spark plug cap and remove dirt from the area.
- Use a spark plug wrench to remove the spark plug
- Inspect the plug; replace it if the electrode is worn, or if the insulator is cracked or chipped. Clean plug completely if you



---

are going to reuse it.

- d) Measure the spark plug gap with a suitable gauge. The gap should be 0.7 - 0.8 mm. Correct the gap, if necessary, by bending the side electrode.
- e) Install the spark plug carefully by hand, to avoid cross-threading.
- f) After the spark plug seats, tighten with a spark plug wrench to compress the washer.
- g) Install the spark plug cap on the spark plug.

#### **NOTICE**

- **An incorrect spark plug can cause engine damage.**
- **For good performance, the spark plug must be properly gapped and free of deposits.**
- **When reinstalling the old spark plug, screw 1/8 to 1/4 turn after the spark plug is in place. When installing a new spark plug, you need to twist 1/2 turn.**
- **If the spark plug is not tightened, the engine will overheat and damage the**

#### **5) Carburetor Modification for Altitude Operation**

At high altitude, the standard air-fuel mixture will be too rich. Performance will decrease, and fuel consumption will increase. A very rich mixture will also foul the spark plug and cause hard starting. High altitude performance can be improved by specific modifications to the carburetor. If you always operate your lawn mower at altitude above 1,500 meters, have your servicing dealer perform these carburetor modifications. Even with carburetor modification, engine horsepower will decrease about 3.5% for each 300 meters increase in altitude.

The effect of altitude on horsepower will be greater than this if no carburetor modification is made.

#### **NOTICE:**

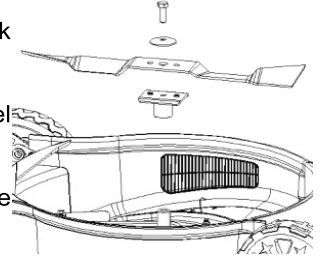
**When the carburetor has been modified for high altitude operation, the air-fuel mixture will be too lean for low altitude use. Operation at altitude below 1,500 meters with a modified carburetor may cause the engine to overheat and result in serious engine damage. For use at low altitude, have your servicing dealer return the carburetor to original factory specifications.**

## 9.4 Blade removal and installation

Torque wrench for blade installation. Wear gloves to protect your hands. In order to avoid tool imbalance or poor cutting effect caused by poor blade, the blade should be sharpened by a professional at the dealer. Please replace it with an original blade.

### 1) Disassembly:

- a) Turn off the fuel switch and remove the spark plug cap.
- b) Tilt the lawn mower to the right, with the fuel tank cover facing up.
- c) Fix the cutter head, and remove the blade bolt, dish washer, blade, and cutter seat.



**Notice: Before disassembly, fix the blade by hand to prevent the blade from rotating during the disassembly process.**

### 2) Install:

- a) Clean the dust and grass clippings from the blade and the chassis.
- b) The blade bolts pass through the dish washer, the blade, and the knife seat respectively, and then are fixed to the power shaft.
- c) Fix the blade by hand and tighten the blade nut with a torque wrench to prevent the cutter head from rotating during the tightening process. Bolt tightening torque: 53.9N•m (5.5kgf•m)

**Notice: The blade bolts are specially used for lawn mowers. If they need to be replaced, only original parts can be used. Otherwise, the blade may**

- d) 4. After installing the blade, the blade rotates one circle to check for interference.

### Warning:

**The bent and deformed blade may cause serious personal injury.**

If you do not have a torque wrench, please go to the service shop to tighten the blade fastening bolts and cutter head support bolts, otherwise the lawn mower cannot



---

be used. Over tightening the blade fastening bolts and the cutter head support bolts will cause the bolts to break, and if they are too loose, they will loosen and fall off. When the lawn mower is operated, the blade may fly out of the lawn mower. In both cases, the blades of the lawn mower may fly out during operation.

## **9.5 Grass bag cleaning and replacement**

- **Cleaning:** Wash the bag with a garden hose, and allow it to dry completely before use; a wet bag will clog quickly.
- **Replacement:** Replace a worn or damaged bag with an original genuine bag or its equivalent.
- **Removal:** Unclip the plastic edges of the bag from the frame. Remove the bag from the frame.
- **Big installation:** Insert the frame into the new bag. Clip the plastic edges to the frame as shown

# 10. Trouble shooting

## Engine problems

Problems	Possible cause	Correction
No start	Fuel valve OFF.	Turn fuel valve ON.
	Throttle lever in wrong position.	Move throttle lever to CHOKE position, unless the engine is warm.
	Out of fuel.	Refuel.
	Bad fuel; mower store without treating or draining gasoline, or refueled with bad gasoline.	Drain fuel tank and carburetor. Refuel with fresh gasoline.
	Spark plug faulty, fouled, or improperly gapped. Spark plug wet with fuel (flooded engine).	Clean, adjust or replace spark plug. Dry and reinstall spark plug. Start engine with throttle lever in HIGH position.
	Fuel filter clogged, carburetor malfunction, ignition malfunction, valves stuck, etc.	Take the lawn mower to the dealer for repair or refer to the maintenance manual.
Lack of power	Not placed in "high" gear. (When equipped with a throttle switch)	Shift to "high" gear.
	The grass is too deep.	Increase the cutting height, narrow the cutting width, or increase the number of cuts.
	Blockage in the chassis.	Clean the chassis.
	The filter element is clogged.	Clean or replace the filter element.

	Bad oil: improperly handled or not drained oil during storage; bad oil added.	Drain the oil in the tank and carburetor and add new oil.
	Clogged fuel filter, carburetor failure, ignition coil failure, valve sticking, etc.	Take the lawn mower to the dealer for repair or refer to the repair manual.
Excessive vibration	The chassis is blocked by grass or stones.	Clean the chassis.
	The blade is loose, bent, damaged, or the sharpness of the blade is uneven.	Tighten the blade fixing bolt: replace the damaged blade.
	Mechanical damage, such as bent crankshaft.	Take the lawn mower to the dealer for repair or refer to the repair manual.
Poor cutting quality; poor performance in grass bags	The engine speed is too low and the cutting effect is not good.	Cut the throttle lever to the "high" position (when equipped with a throttle switch).
	The lawn mower works too fast and does not meet the lawn condition.	Loosen the driving lever and push it into place.
	Improper cutting height setting	Modify the cutting height.
	Grass bag is too full or clogged.	Empty the grass bag. Need to be cleaned if clogged.
	Chassis block.	Wash the chassis.
	The blade is blunt, worn, or damaged.	Sharpen or replace the blade if necessary.
	The blade is improperly installed.	Take the lawn mower to the dealer for repair or refer to the maintenance manual.

## Product warranty

### Guarantee period and guarantee content:

- 1) This product is only used for home garden mowing, not for commercial or professional purpose.
- 2) Within six months from the date of purchase of the product or within 200 hours of cumulative operation (whichever comes first).
- 3) Any failures caused by the purchase of the machine produced by our company under normal use in accordance with this manual will be repaired free of charge.

### Effectiveness of the warranty service:

When customers are buying products, please fill in the correct and true personal information and product information on the product purchase voucher with the dealer, and sign it into effect!

### The following conditions are not covered under warranty:

- Cannot provide purchase information and valid sales certificates for this product;
- Failure or damage caused by operation, maintenance or repair not in accordance with the requirements of this manual;
- Failure caused by the use of non-genuine parts and inferior gasoline and engine oil;
- Failure or damage caused by handling or dropping after

### During the warranty period, if one of the following situations occurs, it can be repaired by paid.

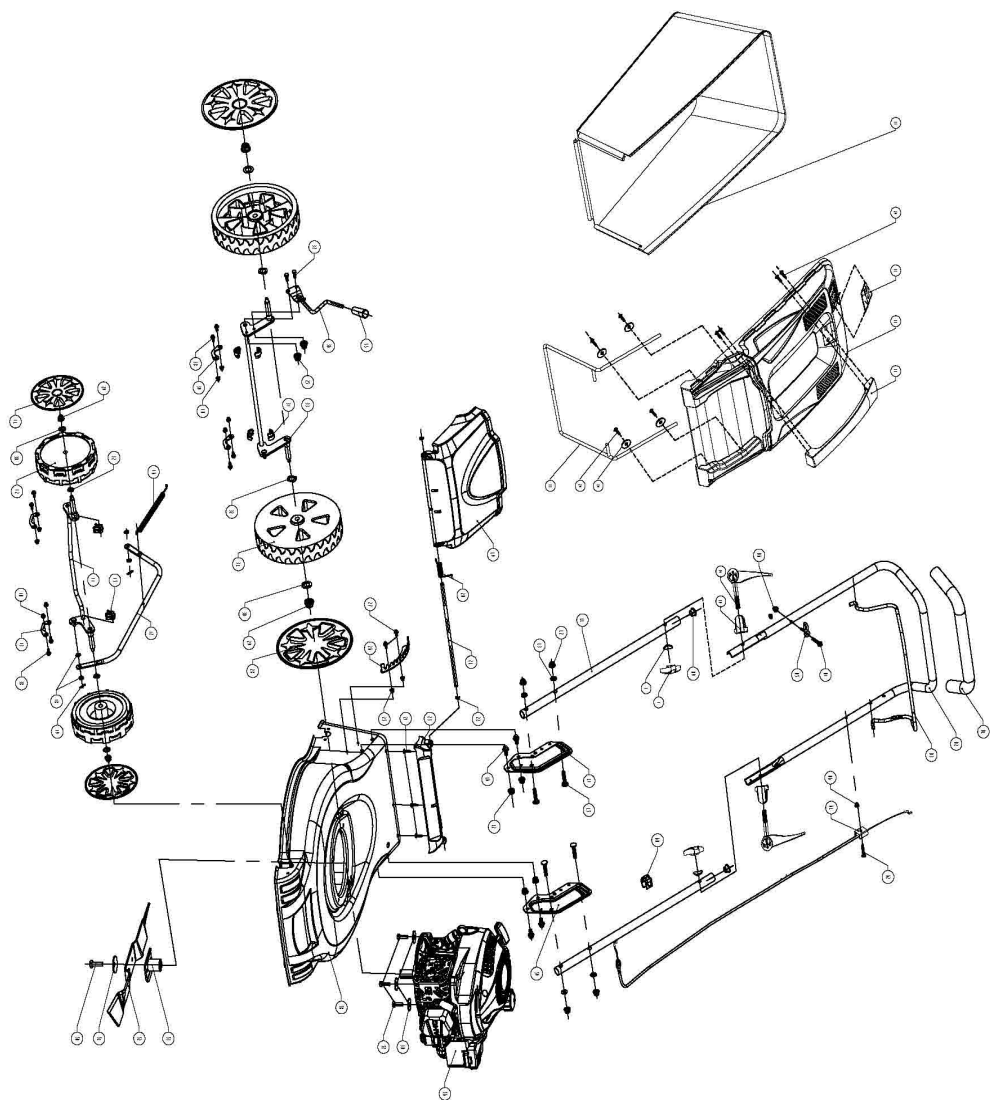
- Attached tools and quick wear parts are damaged;
- Repair in a place other than the dealer where the product was purchased;
- Maintenance, cleaning, adjustment and regular maintenance.

---

<p>purchase;</p> <ul style="list-style-type: none"><li>■ Modification or transformation without permission;</li><li>■ Damage caused by natural disasters or the environment;</li><li>■ Other man-made damages caused by non-product quality reasons.</li></ul>	
--	--

**The company does not bear the shipping costs for repairs.**

**Note: Only the above guarantee is provided, and other express or implied guarantees (including the implied guarantees of merchantability, reasonableness and adaptability to a particular application and application, etc.) are not made. No matter in the contract or civil negligence, or in other respects, the manufacturer is not responsible for any special or accidental indirect damage.**

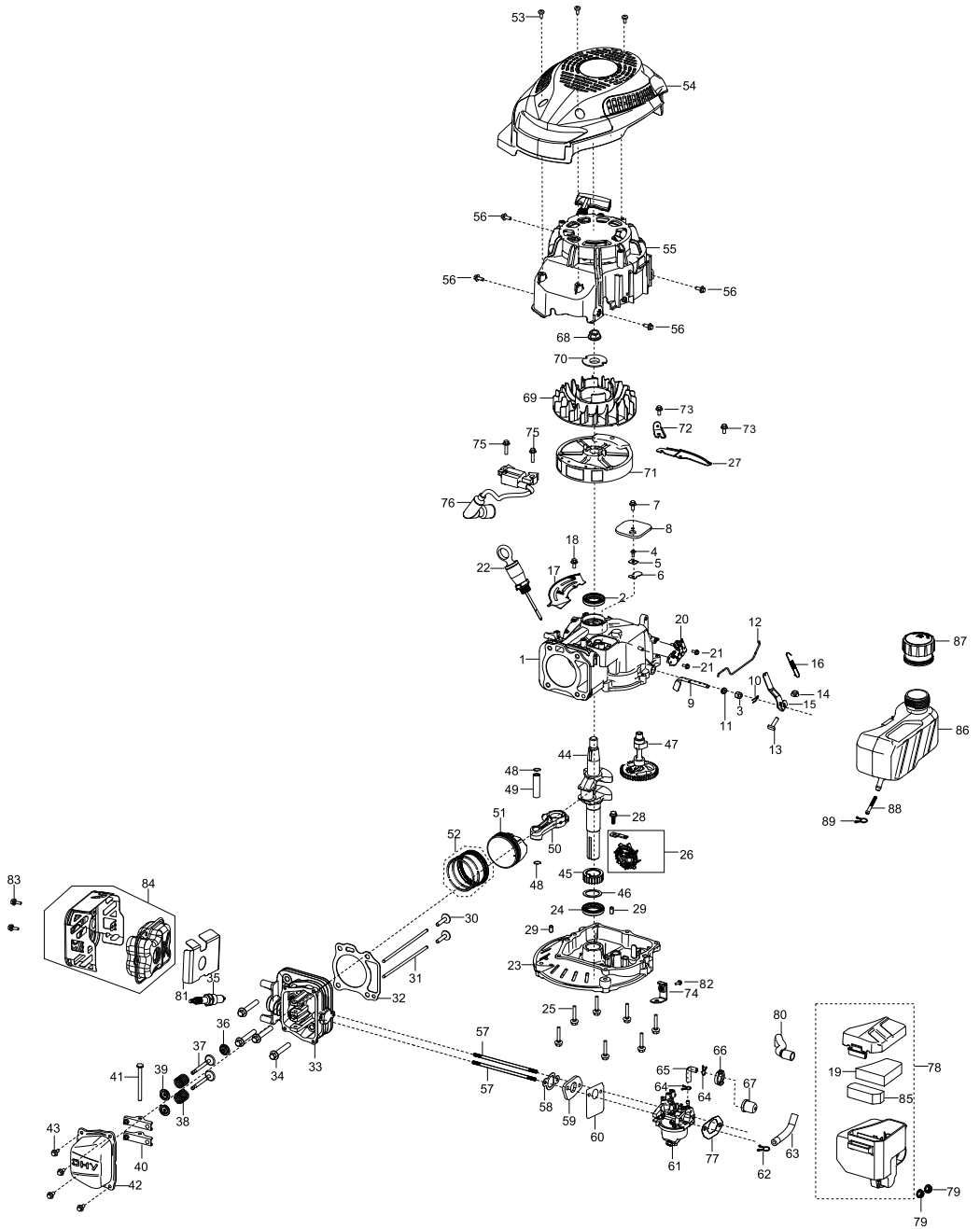


No	Part code	English name	Qty/Set
66	2.70.04.000100-1	grass catcher full warning	1
65	2.70.04.000260	grass catcher cover	1
64	2.70.04.000106	fast lock knob	2
63	2.70.04.000003	muclicing plug	1
62	2.63.01.00186-1	hexagon flange bolt	1
61	2.70.04.000018	Switch wire	1
60	2.06.04.0693400	Wire clip	1
59	2.70.04.000016	handle bar fixing seat( left)	1
58	2.70.04.000008	Deck	1
57	2.63.01.00225	Bolt	3
56	1.09.03.016800	Engine	1
55	2.70.04.000099-1	grass catcher cover lift handle	1
54	2.63.01.04156	washer	2
53	2.12.01.100248	Blade seat	1
52	2.12.01.1003600	Blade	1
51	2.70.04.000026	butterfly washer	1
50	2.63.01.04270	Imperial thread hexagon bolt	1
49	2.63.01.02476	B cutter	2
48	2.63.01.02093	flat washer	4
47	2.70.04.000033	Connection rod	1
46	2.70.04.000034	Connection rod spring	1
45	2.70.04.000029	wheel axle sleeve	2
44	2.70.04.000027	front wheel axle	1
43	2.70.04.000031	fixing plate	2
42	2.70.04.000082	walking wheel	2
41	2.70.04.000085	wheel cover	2
40	2.63.01.01484	air cleaner nut	8

39	2.70.04.000032	fixing plate	2
38	2.63.01.02417	hexagon flange bolt	8
37	2.63.01.02885	Hexagon socket screws with flat round head	2
36	2.70.04.000036	shift adjustment rod	1
35	2.70.04.000037	shift adjustment rod sheath	1
34	2.70.04.000030	wheel axle sleeve	4
33	2.70.04.000028	rear wheel axle	1
32	2.63.01.04264	wave type spring washer	4
31	2.70.04.000083	walking wheel	2
30	2.63.01.02504	flat washer	7
29	2.63.01.02112	hexagon nylon self lock nut	4
28	2.70.04.000086	wheel cover	2
27	2.63.01.01756	hexagon flange bolt	2
26	2.70.04.000035	shift adjustment fixing plate	1
25	2.63.01.00291	hexagon flange nut	4
24	2.63.01.04268	crossed tapping screw	3
23	2.70.04.000042	rear cover base support	1
22	2.63.01.03679	split washer	2
21	2.70.04.000041	rear cover shaft	1

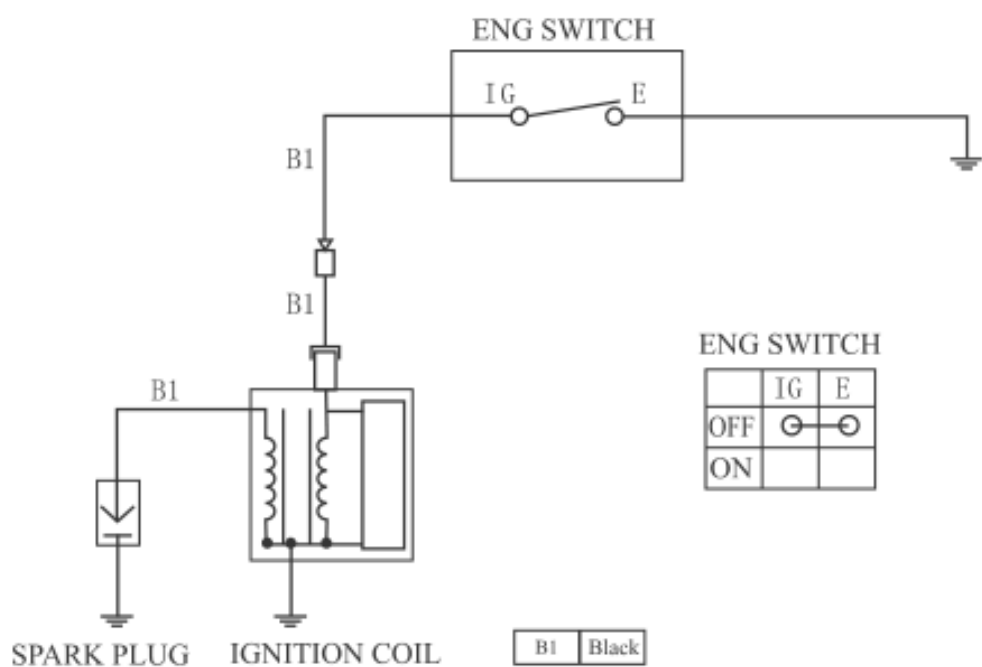
20	2.70.04.000025	rear cover torsional spring	1
19	2.70.04.000023	rear cover	1
18	2.70.04.000101	grass catcher frame	1
17	2.70.04.000101	grass catcher upper bag	1
16	2.63.01.02772	hexagon flange bolt	4
15	2.63.01.04261	Bolt	4
14	2.70.04.000017	handle bar fixing seat( right)	1
13	2.63.01.02093	flat washer	4
12	2.63.01.01492	flywheel nut	10
11	2.70.04.000015	middle handlebar	2
10	2.70.04.000107	fast lock knob cushion block	2
9	2.66.17.000037	bumper cap	2
8	2.70.04.000089	insulation plate2	2
7	2.70.04.000105	triangle knob	2
6	2.63.01.02760	hexagon nut	2
5	2.70.04.000020	starter hook	1
4	2.63.01.01934	starter hook	1
3	2.70.04.000019	hexagon flange bolt	1
2	2.70.04.000014	switch lever	1
1	2.70.04.000013	handlebar sleeve	1

+





# XI. ELECTRIC DIAGRAM



**CERTIFICATO DI GARANZIA**  
**Vinco s.r.l. - P.zza Statuto,1 - 14100 Asti - Italy**

Modello: \_\_\_\_\_ Codice: \_\_\_\_\_

Data di acquisto \_\_\_\_\_

**QUESTO CERTIFICATO NON DEVE ESSERE SPEDITO MA  
CONSERVATO UNITAMENTE ALL'IMBALLO ORIGINALE**

La garanzia ha validità soltanto se corredata da **RICEVUTA FISCALE**,  
Vi consigliamo quindi di allegarla al presente certificato di garanzia.

La garanzia ha valore per un periodo di 2 anni dalla data di acquisto (un anno in caso di beni strumentali) e viene comprovata da un documento valido agli effetti fiscali, rilasciato dal venditore autorizzato, riportante la ragione sociale dello stesso e la data in cui è stata effettuata la vendita. Affinché la garanzia sia operativa, è necessario che il certificato di garanzia sia conservato unitamente ad uno dei documenti validi agli effetti fiscali riportante gli estremi identificativi del prodotto, e che entrambi siano esibiti in caso di intervento da parte di personale tecnico dei Centri Assistenza Autorizzati.

Questo certificato di garanzia si riferisce alle condizioni di Garanzia Convenzionali del Produttore nei confronti del Consumatore e non pregiudica i diritti della Garanzia Europea (previsti dalla Dlgs 206/2005 Codice del Consumo).

Per fruire del servizio di assistenza tecnica in garanzia, il consumatore può:

1. recarsi presso il punto vendita senza alcuna incombenza ulteriore; 2. richiedere il servizio aggiuntivo di assistenza con ritiro a domicilio. Il servizio è aggiuntivo e non sostitutivo rispetto a quello di cui al punto 1 e si applica solo alle tipologie di prodotti previste da Vinco. Invitiamo a contattare Vinco allo scopo di verificare se il prodotto possa usufruire di questo servizio.

All'interno del periodo di garanzia, Vinco S.r.l. si impegna a sostituire o riparare gratuitamente le parti componenti l'apparecchio che risultino difettose all'origine per vizi di fabbricazione, senza alcuna spesa per il consumatore.

Non sono coperte dalla garanzia tutte le parti che dovessero risultare difettose a cause di negligenza o trascuratezza nell'uso (mancata osservanza delle istruzioni per il funzionamento dell'apparecchio), errata installazione o manutenzione, manutenzione operata da personale non autorizzato, danni da trasporto, ovvero di circostanze che, comunque, non possono farsi risalire a difetti di fabbricazione dell'apparecchio. Sono esclusi dalle prestazioni in garanzia gli interventi inerenti l'installazione e l'allacciamento agli impianti di alimentazione nonché le manutenzioni citate nel libretto di istruzioni.

Non sono inoltre coperti da garanzia le avarie causate da urti, manomissioni o installazioni improprie. Questo certificato di garanzia è valido solo se l'apparecchiatura è venduta ed installata sul territorio italiano (compresi la Repubblica di San Marino e la Città del Vaticano). La richiesta di intervento per riparazioni in garanzia verrà evasa con prontezza dagli organi competenti, compatibilmente con le esigenze di carattere organizzativo. Il produttore non potrà comunque rispondere di disagi dipendenti da eventuali ritardi nell'esecuzione dell'intervento. Il consumatore finale dovrà presentare l'apparecchio da riparare in garanzia presso il punto vendita, unitamente al documento fiscale di acquisto ed al certificato di garanzia. Il produttore declina inoltre ogni responsabilità per eventuali danni che possano, direttamente o indirettamente, derivare a persone, cose ed animali domestici in conseguenza della mancata osservanza di tutte le prescrizioni indicate nell'apposito Libretto Istruzioni e concernenti specialmente le avvertenze in tema di installazione, uso e manutenzione dell'apparecchio. Qualora l'apparecchio venisse riparato presso uno dei Centri Assistenza Autorizzati indicati dal produttore, i rischi di trasporto relativi saranno a carico dell'utente nel caso di invio diretto ed a carico del Servizio nel caso di ritiro presso l'utente.



## DICHIARAZIONE DI CONFORMITÀ CE

(Ai sensi della direttiva macchine 2006/42/CE Allegato II parte 1.A)

**VINCO S.r.l. - Piazza Statuto 1 - 14100 Asti**

dichiara sotto alla propria responsabilità, che la seguente macchina, identificata come:

Denominazione, funzione, tipo: rasaerba con motore a scoppio

Modello: SRCS-46A-M - 67415

Marca: POLAR

Mese e anno di fabbricazione: Dicembre 2023

soddisfa i pertinenti requisiti delle seguenti Direttive:

Direttiva Macchine 2006/42/CE

EMC 2014/30/UE

OND 2005/88/EC e 2000/14/CE

RoHS 2011/65/EC

Livello di potenza acustica garantito  $L_{WA} = 96$  dB

Norme armonizzate:

EN ISO 5395-1:2013/A1:2018

EN ISO 5395-2:2013/A2:2017

EN ISO 3744, EN 14982 :2009

Vinco s.r.l., Piazza Statuto 1 - 14100 Asti, Italia.

Asti, 27/10/2023

Luogo e data

Legale rappresentante (Lidio Conti)



Le immagini potrebbero differire dal reale design delle stesse

**MADE IN CHINA**

Importato da Vinco S.r.l.

14100 Asti (AT) ITALY

Tel: +39 0141 351284 Fax: +39 0141 351285

E-mail: [info@vincoasti.it](mailto:info@vincoasti.it) - [www.vincoasti.com](http://www.vincoasti.com)

**CENTRO RICAMBI E ASSISTENZA:**

Viale Giordana, 7 - 10024 Moncalieri (TO) - ITALIA Tel: +39 0141/1766315

Assistenza e-mail: [assistenza@vincoasti.it](mailto:assistenza@vincoasti.it) - Ricambi: [ricambi@vincoasti.it](mailto:ricambi@vincoasti.it)